

KARMAR

SAKURA



2022





# CHAPTERS

1

SEED

KARMAR

2

SOIL

ISTANBUL

3

SOWING

ARCHITECTURE

4

GROWTH

ENGINEER

5

LIFE

SAKURA

1

SEED  
—  
KARMAR



**Sakura draws attention with its colors, beauty and strong roots when it blooms.**  
Sowing the seeds of Sakura with great love, Karmar aims to create a safe living space  
where families will live in peace for generations.





# KARMAR

As group companies, we are among Turkey's top 500 industrial companies thanks to our achievements, vision and mission. With our strategic, target-oriented project approach that will bring new perspectives to the sector, we are one of the companies that achieve stable and sustainable growth.

Our most fundamental mission is to ensure that the buildings with contemporary architecture, which we have created by treating the natural resources of nature in the most respectful way, add great value to their geography and our country.

The main purpose of all the projects we produce with our experienced corporate structure, expert human resources and big investments in technology is to maximize the quality of life and to create comfort areas designed in a way to make you feel the sense of happiness in every detail.

Our company, which offers perfect customer satisfaction thanks to the importance we give to human values, aims to be a leader in its field by putting forward reference works in every project it has developed, and will always seek perfection in all its future works.

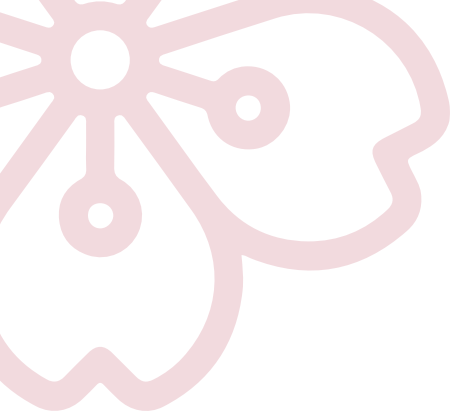


2

SOIL  
—  
ISTANBUL



**Istanbul, with its history, geography and values,** is one of the metropolises with the most precious lands in the world. The lands in the center of Istanbul have been the center of attraction for the world throughout history.



## A BRAND NEW LIVING SPACE AT BASIN EKSPRES

Karmar Sakura is positioned as a great center of attraction for families with its large square meters, comfortable flat designs and peaceful landscape. Social areas, sports facilities and walking tracks, prepared with the smallest detail in mind, bring along a pleasant life experience.









## EVERYWHERE IS CLOSE WITH KARMAR SAKURA

- 212 Power Outlet AVM - 3 Minutes
- Mall Of Istanbul - 7 Minutes
- Çam and Sakura Hospital - 15 Minutes
- Ataturk Airport - 15 Minutes
- Istanbul Airport - 25 Minutes

3

SOWING  
—  
ARCHITECTURE





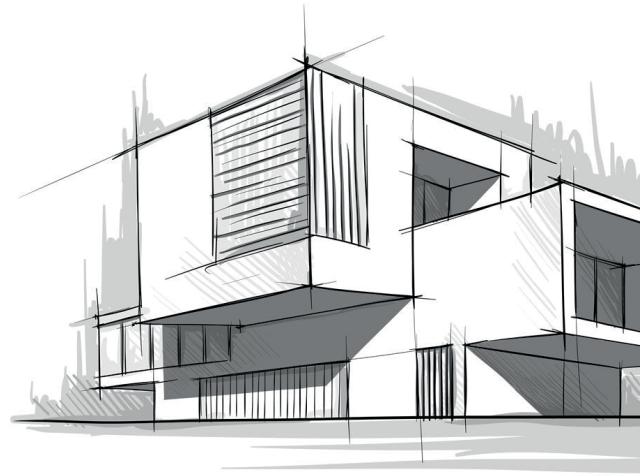
Flowers that bloom after a good sowing process add color to nature.  
**Good architecture beautifies its surroundings.** With its modern architecture, Karmar Sakura  
inspires its surroundings and adds value to its country.

## EXPERTISE IS IN EVERY DETAIL

Karmar carries out the Sakura project with its professional team, from its architecture to construction. Every detail has been thoughtfully designed with the aim of creating the best possible work.

## SILENCE OF PEACE WITH WALL SPACES UP TO 40 CM

Thanks to the spaces created up to 40 cm between the walls of the apartments and the insulation measures on the floors, a peaceful silence is ensured.



## EXTRA SPACE UP TO 15%

Underfloor heating systems eliminate the use of heater cores in the apartment, giving each house extra space up to 15%

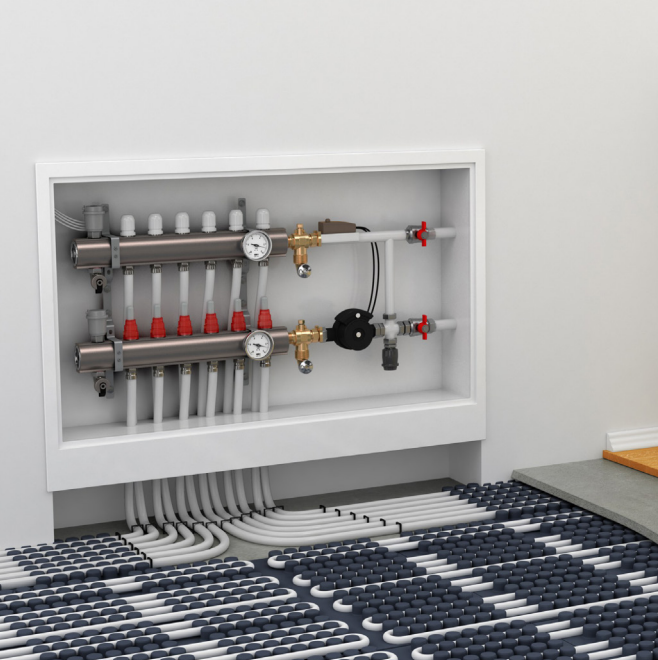
## SPACIOUS BALCONIES

Compared to the different structures in the region, we have the widest balconies in our apartments and offer spacious social areas inside the houses.



## VERDANT GREEN GARDEN FLOORS

The garden floors, which are a pleasant resting point with their lush appearance, provide large open air spaces to the homeowners.



## WIDE CORRIDORS

The importance of personal spaces is preserved in every area, thanks to the door distances between the two apartments being designed with gaps of up to 2.5 meters.





## WITH ITS GREEN BUILDING FEATURE NATURE'S FRIEND KARMAR SAKURA

The practice of making constructions, which are designed in accordance with world standards, without harming people, the environment and nature is called “Green Building”. Karmar is proud of having a project designed in accordance with the principles of Green Building.

In Karmar Sakura, the gardens are irrigated by storing and reusing rainwater. The

drain water in the sinks is stored in a certain area and serves as a recycling to be used in the toilet bowls.

With all these awareness and technological equipment, Karmar realizes Sakura as not only a construction company, but also a company that thinks, designs and adds value to its country and the world.

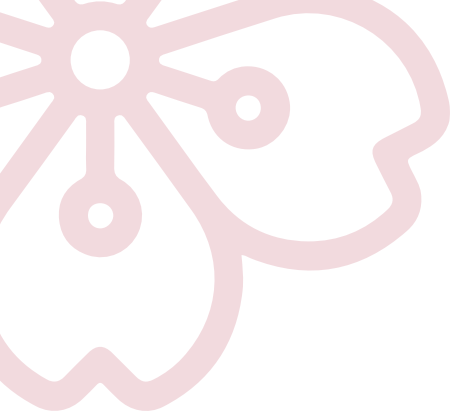


ENVIRONMENTALIST

SENSITIVE TO GREEN

ECONOMICAL

SUSTAINABLE



## THE KEY TO PERFECT COMFORT

Architectural works done with due diligence and mastery are designed to maximize comfort and for families to live in peace and comfort.

With 2+1, 3+1 and 4+1 options, all apartments offer the widest square meters of their kind to their homeowners.

Karmar Sakura is proud to present the key to the door to perfect comfort to families.





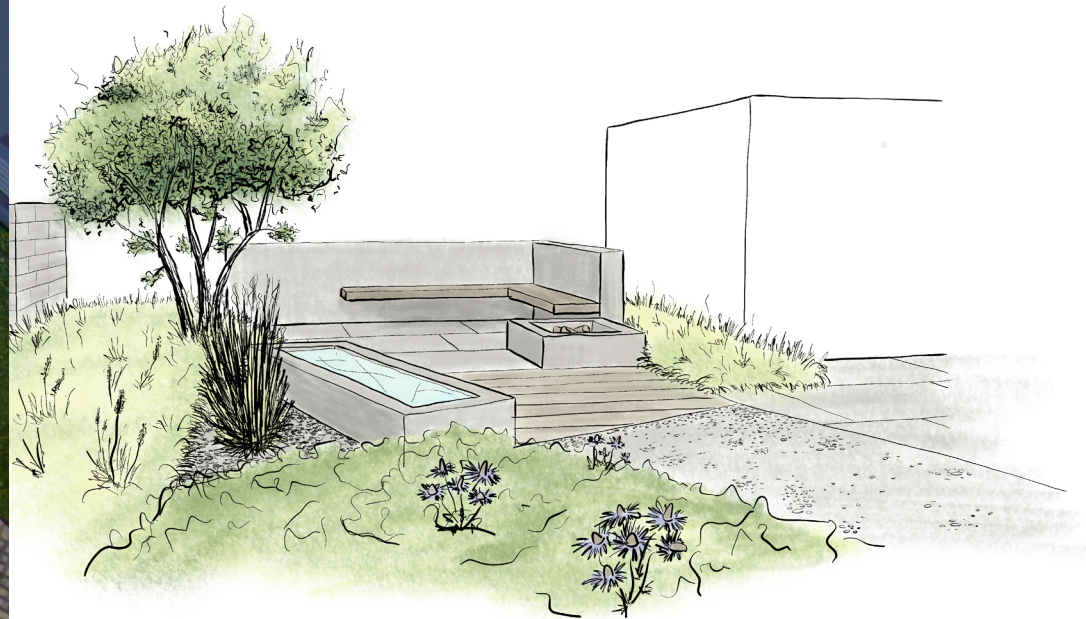






## GARDENS EXCLUSIVE TO YOU AT KARMAR SAKURA

Garden areas up to 4000 square meters are offered for common use in Karmar Sakura. A total of 1000 square meters of garden areas where privacy is protected with a private area from 20 square meters to 90 square meters exclusive to the apartment owners are also waiting for you in Sakura.





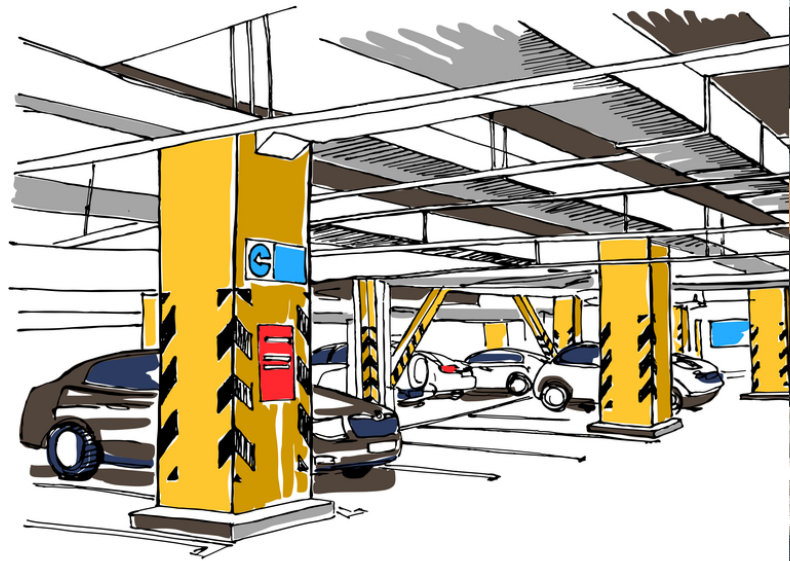
## CHARGING STATIONS FOR ELECTRIC VEHICLES

Equipped with technological infrastructure, Karmar Sakura reminds electric vehicle owners that they are in the right place with the charging stations in its parking lots.



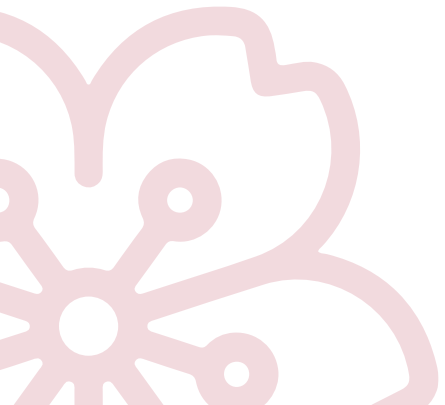
## 2 DIFFERENT RAMPS FOR ENTRY-EXITS IN PARKING AREAS

Our hosts feel the comfort of life of Karmar Sakura while they enter and exit the parking garages with their cars using two different ramps.



## THE NEW ADDRESS OF SOCIALITY AND ENTERTAINMENT

While offering a wide, spacious and well-equipped comfort area, Karmar Sakura also differentiates itself with the facilities it contains. Families discover new hobbies in gracefully designed spaces. Children specialize in sports and arts, where they will develop themselves professionally, while having fun.





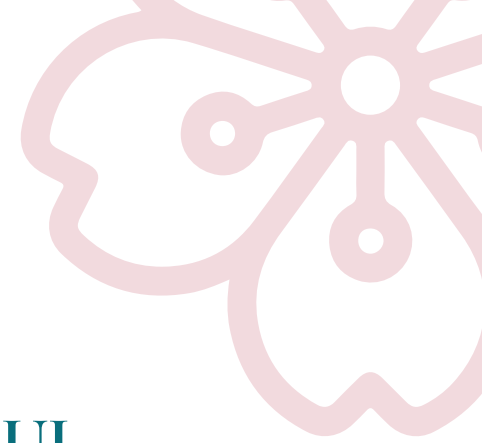
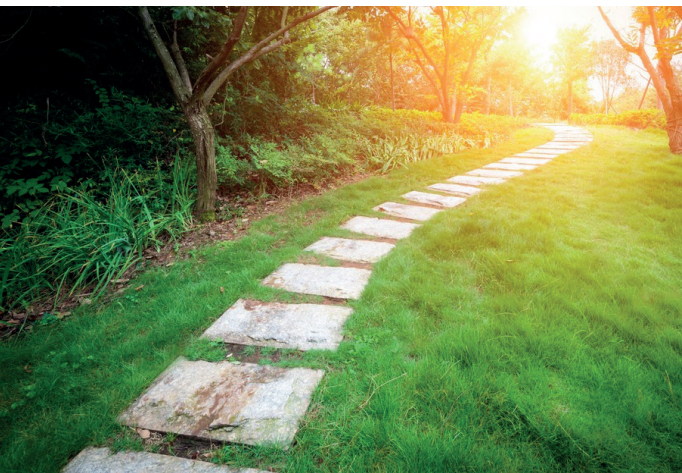
## EQUIPPED AND USEFUL LIVING AREAS

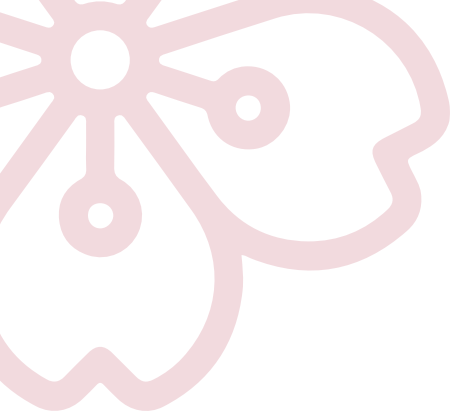
Karmar Sakura provides well-equipped and useful living spaces to its homeowners with its facilities that enable the easy practice of many sports branches.

In Karmar Sakura; from the sauna room to the basketball court, the pilates studio to the swimming pools, all facilities have been designed to make users feel energetic and happy at all times

## RESPECTING PERSONAL AREAS

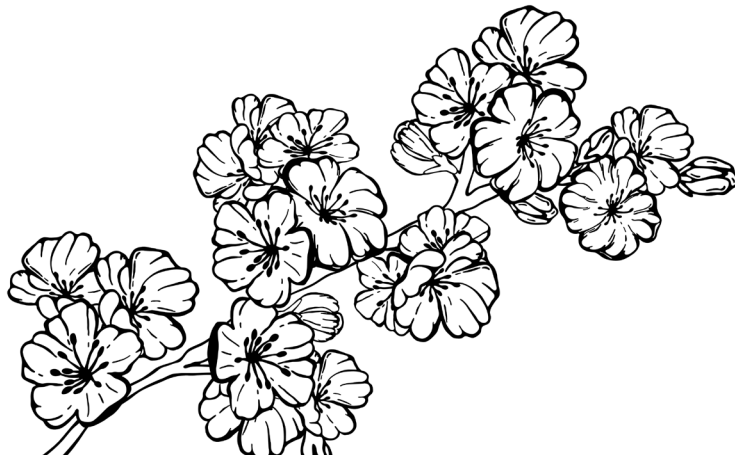
All apartments and common areas of Sakura respect privacy. Separate use of men and women in areas such as gyms, Turkish bath, sauna, swimming pools is considered.





# SOCIAL LIFE IN SAKURA

Sakura makes the quality of life most enjoyable with the variety and equipment of its sports facilities. Social living areas with many facilities such as sports halls, walking track and basketball court encourage the homeowners to have a healthy life.



## WALKING TRACK

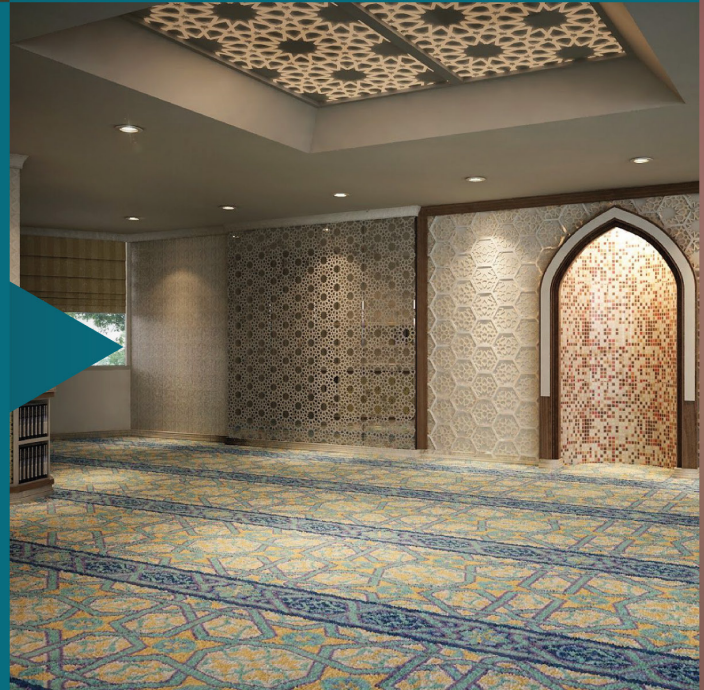
# BASKETBALL COURT

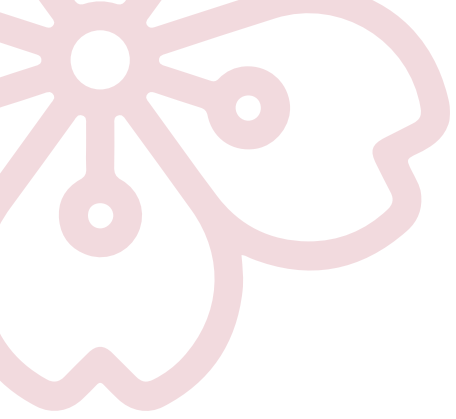


# SPORTS AREAS



# PRAYER ROOM

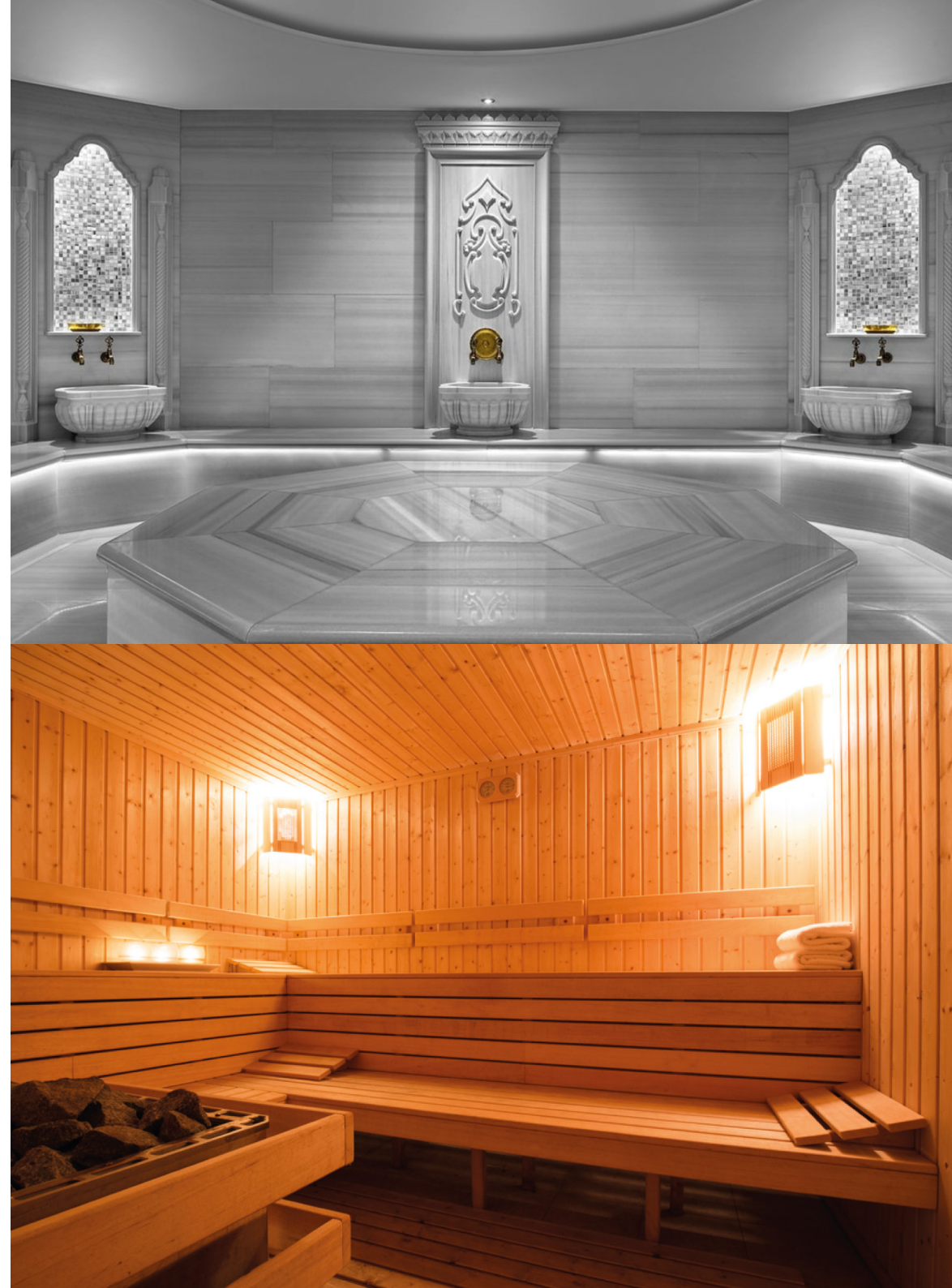




## THE ADDRESS OF RELIEF SAKURA

Two different swimming pools and two different gyms, designed for the use of women and men in separate areas, become a frequent destination for homeowners who are accustomed to swimming and exercising regularly.

The sauna and hammam sections of Karmar Sakura, which are used by women and men at certain times, become a relaxation center for families throughout all four seasons.







DON'T WISH FOR IT.  
WORK FOR IT.

MOKK LOB III  
DOMAL AMEN LOB II

4

GROWTH  
—  
ENGINEER



A plant grown with experience reaches its most productive form by passing the growth process in the most correct way. A living space that grows thanks to experienced engineering also **offers the highest level of comfort to the service of people.**



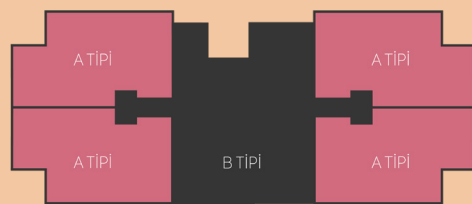
## THE BIGGEST HAPPINESS IS IN THE WIDEST SQUARE METERS

All apartments of Karmar Sakura promise to provide the greatest happiness by offering the widest square meters of their kind to the homeowners. In the brand new Karmar Sakura houses, where you move freely, use your personal spaces as you wish, and increase the comfort level of each individual in your family, your level of well-being is moved to a completely different point.



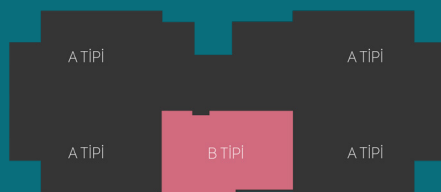
# TYPE A 2+1

Living Room	26.24 m <sup>2</sup>
Kitchen	10.08 m <sup>2</sup>
Balcony	4.78 m <sup>2</sup>
Master Bedroom	14.24 m <sup>2</sup>
Bedroom	10.76 m <sup>2</sup>
Master Bathroom	3.51 m <sup>2</sup>
Bathroom	4.50 m <sup>2</sup>
Hall	4.73 m <sup>2</sup>
Entrance	3.06 m <sup>2</sup>
Laundry Room	0.8 m <sup>2</sup>
<b>Gross Area</b>	<b>122.88 m<sup>2</sup></b>



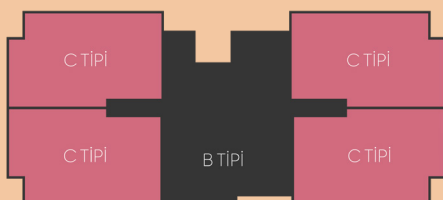
# TYPE B 2+1

Living Room	25.41 m <sup>2</sup>
Kitchen	10.00 m <sup>2</sup>
Balcony	3.29 m <sup>2</sup>
Master Bedroom	14.15 m <sup>2</sup>
Bedroom	9.18 m <sup>2</sup>
Master Bathroom	2.75 m <sup>2</sup>
Bathroom	4.01 m <sup>2</sup>
Hall	8.23 m <sup>2</sup>
Laundry Room	0.80 m <sup>2</sup>
<b>Gross Area</b>	<b>117.76 m<sup>2</sup></b>



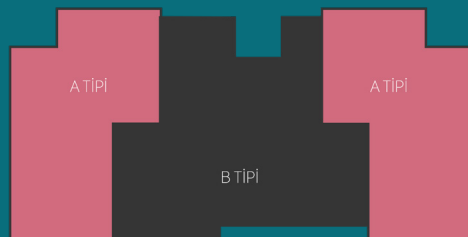
# 3+1

Living Room	28.62 m <sup>2</sup>
Kitchen	12.00 m <sup>2</sup>
Balcony	4.59 m <sup>2</sup>
Master Bedroom	15.10 m <sup>2</sup>
Bedroom	10.78 m <sup>2</sup>
Bedroom	10.33 m <sup>2</sup>
Master Bathroom	3.62 m <sup>2</sup>
Bathroom	4.51 m <sup>2</sup>
Hall	6.54 m <sup>2</sup>
Entrance	4.20 m <sup>2</sup>
Laundry Room	0.89 m <sup>2</sup>
<b>Gross Area</b>	<b>150.76 m<sup>2</sup></b>



# TYPE A 4+1

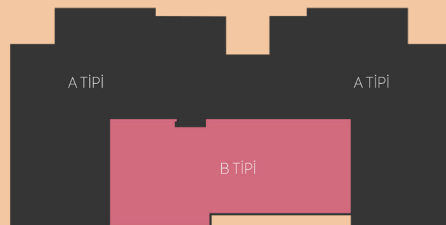
Living Room	35.63 m <sup>2</sup>
Kitchen	12.70 m <sup>2</sup>
Balcony	4.59 m <sup>2</sup>
Sitting Room	12.36 m <sup>2</sup>
Master Bedroom	17.08 m <sup>2</sup>
Bedroom	11.03 m <sup>2</sup>
Bedroom	11.03 m <sup>2</sup>
Master Bathroom	3.24 m <sup>2</sup>
Bathroom	4.64 m <sup>2</sup>
Hall	11.12 m <sup>2</sup>
Entrance	3.74 m <sup>2</sup>
Laundry Room	1.78 m <sup>2</sup>
<b>Gross Area</b>	<b>190.50 m<sup>2</sup></b>





# TYPE B 4+1

Living Room	<b>35.90 m<sup>2</sup></b>
Kitchen	<b>12.51 m<sup>2</sup></b>
Balcony	<b>4.86 m<sup>2</sup></b>
Sitting Room	<b>12.39 m<sup>2</sup></b>
Master Bedroom	<b>16.56 m<sup>2</sup></b>
Bedroom	<b>11.07 m<sup>2</sup></b>
Bedroom Master	<b>11.06 m<sup>2</sup></b>
Bathroom	<b>4.06 m<sup>2</sup></b>
Bathroom	<b>4.21 m<sup>2</sup></b>
Hall	<b>15.27 m<sup>2</sup></b>
Laundry Room	<b>1.62 m<sup>2</sup></b>
<b>Gross Area</b>	<b>192.31 m<sup>2</sup></b>



5

LIFE  
—  
SAKURA



A life is born with great effort put into a small seed. While this life adds value to its country and the world, it is also a breath of fresh air for humanity. With its innovative ideas, modern architecture and grand vision, **Karmar Sakura comes to life in Basın Ekspres.**





















The central area of the bedroom is dominated by a tufted bed with a light beige headboard and a matching brown blanket. The bed is positioned against a wall with a vertical slat headboard. On either side of the bed are white bedside tables with gold handles, each holding a small vase with dried flowers. A central pendant light with three glass spheres hangs above the bed, while two side pendant lights with circular shades and gold rings are positioned on the walls. The room is finished with a large shaggy rug and a wooden floor.













All visual works in the catalog are for promotional and informational purposes.  
Karmar can make any changes in the project, which it deems necessary.



# SAKURA

